

# Ascend

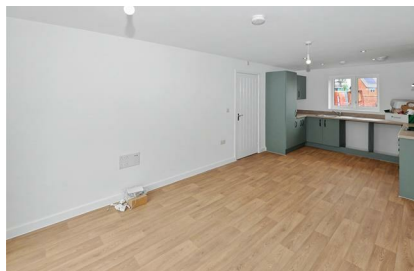
Built on higher standards



**1, 18 Elms Park Road  
Cheltenham GL51 9FU**



**£1,200 Per  
Month**



\*DISCLAIMER\* All photographs, images, and visual representations used in this property advertisement are provided for marketing and illustrative purposes only.

This is a thoughtfully designed two-bedroom apartment that supports modern living with ease, whether your day is centred around working from home or welcoming friends at the weekend.

At its heart, a bright and spacious U-shaped kitchen, living and dining area creates a natural hub for everyday life. There is plenty of room to cook, relax and come together, all within a layout that feels open and comfortable.

The main bedroom offers a calm, private retreat and benefits from its own en suite, giving you added convenience and a sense of separation from the rest of the home. The second bedroom is equally well considered and adaptable, ideal as a guest room, nursery or dedicated home office as your needs evolve.

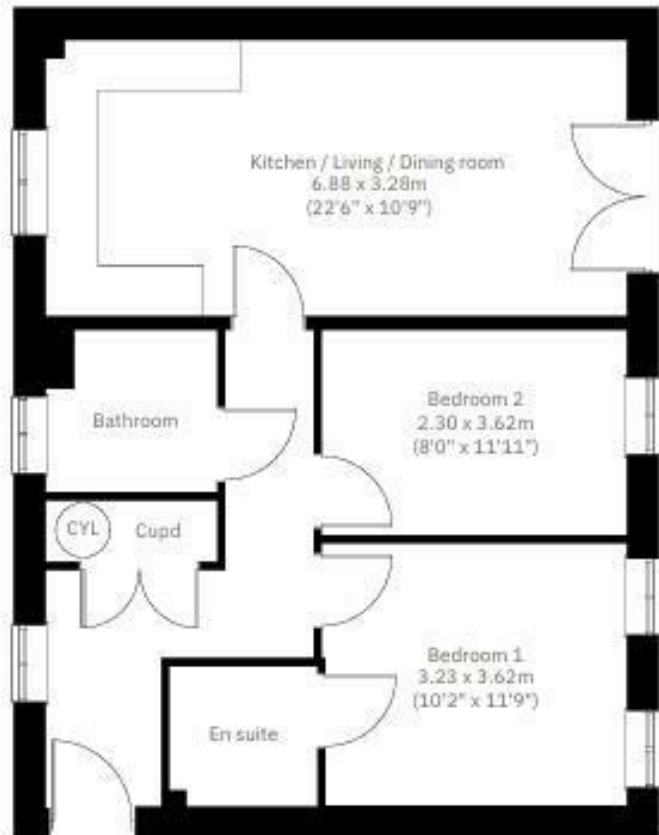
Practical storage has been built in, with a discreet hallway cupboard and cylinder space helping to keep the apartment feeling organised and uncluttered. A modern main bathroom sits off the central hallway, easily accessible for residents and guests alike.

Available NOW

Deposit: £1380

HD: £270

Tax Band D - Cheltenham



Energy Efficiency Rating		Current	Potential
Very energy efficient - lower running costs			
(92 plus) A			
(81-91) B			
(69-80) C			
(55-68) D			
(39-54) E			
(21-38) F			
(1-20) G			
Not energy efficient - higher running costs			
<b>England &amp; Wales</b>		80	80
	EU Directive 2002/91/EC		

Environmental Impact (CO <sub>2</sub> ) Rating		Current	Potential
Very environmentally friendly - lower CO <sub>2</sub> emissions			
(92 plus) A			
(81-91) B			
(69-80) C			
(55-68) D			
(39-54) E			
(21-38) F			
(1-20) G			
Not environmentally friendly - higher CO <sub>2</sub> emissions			
<b>England &amp; Wales</b>			
	EU Directive 2002/91/EC		

**Ascend**  
Built on higher standards

0161 707 7584

192 Monton Road, Monton, Manchester, M30 9PY

monton.sales@ascendproperties.com,  
monton.lettings@ascendproperties.com  
www.ascendproperties.com



These particulars, whilst believed to be accurate are set out as a general outline only for guidance and do not constitute any part of an offer or contract. Intending purchasers should not rely on them as statements of representation of fact, but must satisfy themselves by inspection or otherwise as to their accuracy. No person in this firm's employment has the authority to make or give any representation or warranty in respect of the property